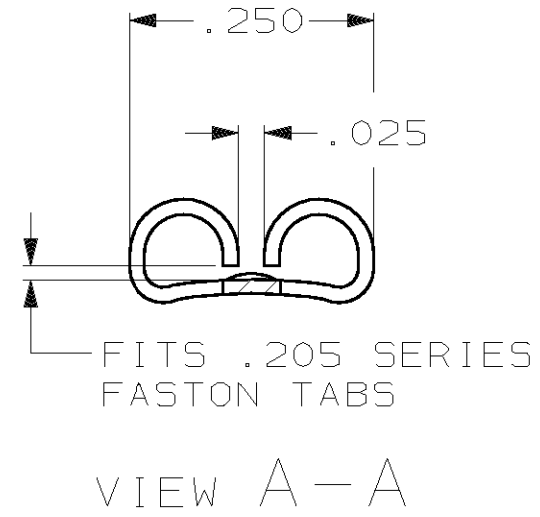
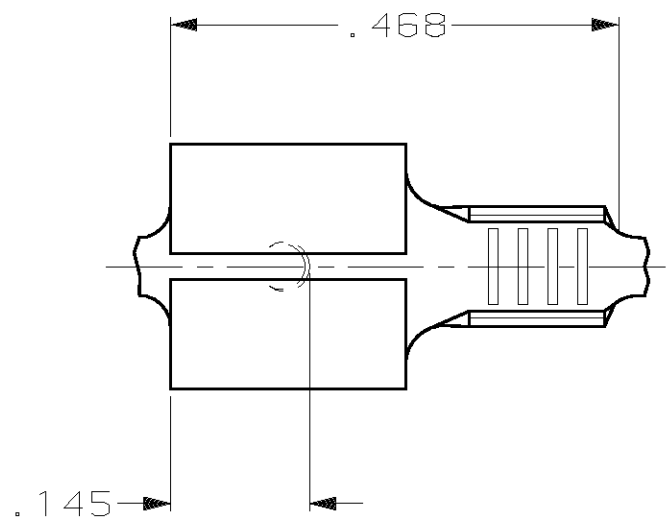
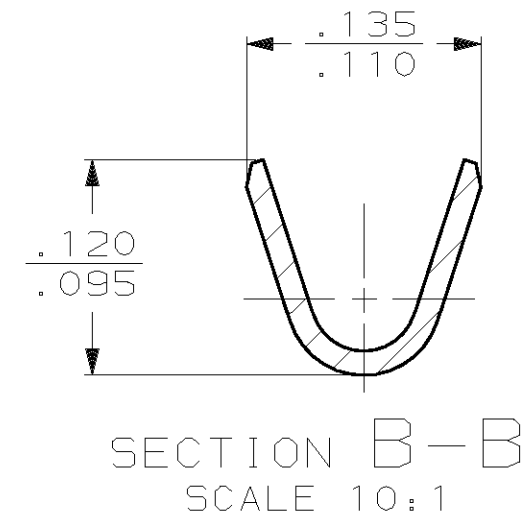
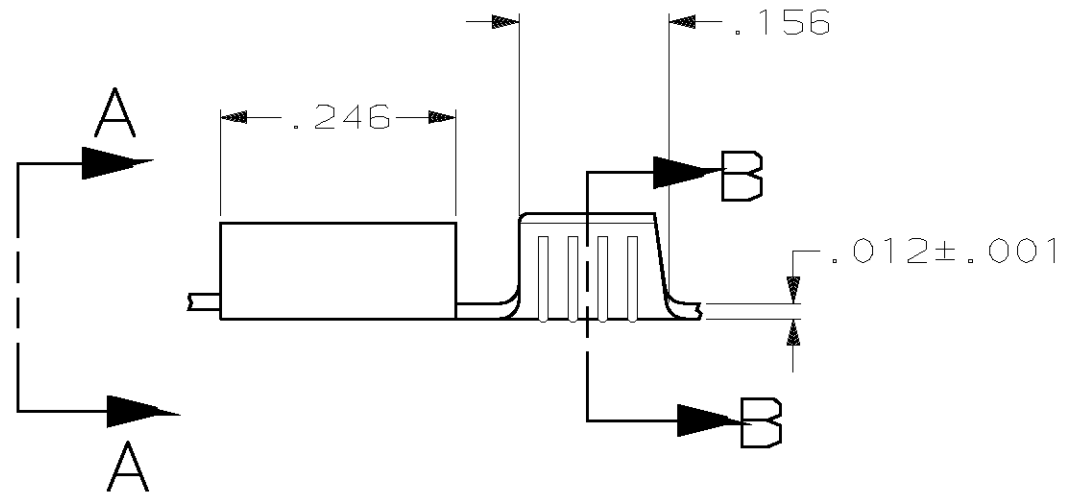


THIS DRAWING IS UNPUBLISHED. RELEASED FOR PUBLICATION, 19 .
 © COPYRIGHT 19 BY AMP INCORPORATED. ALL INTERNATIONAL RIGHTS RESERVED.

LOC	DIST	P	F	REVISIONS				
AF	50			ZONE	LTR	DESCRIPTION	DATE	APPD
					N	ADDED -3 PER OG3A-0126-00	23FEB00	JR/PD



- 1 CONTINUOUS STRIP ON REELS.
- 2 FEED TO BE $.530 \pm .005$.
- 3 MATING TAB THK IS $.020 \pm .001$.
- 4 WIRE SIZE IS #22-#18 AWG.
- 5 REVERSE REELING W/ PAPER INTERLEAVING
- 6 PRELIMINARY - NOT FOR PRODUCTION



TIN .000080 MIN	5 6 42197-3
TIN .000080 MIN	42197-2
OBSOLETE	42197-1
FINISH	PART NO

DO NOT SCALE PRINT. UNLESS SPECIFIED DIMENSIONS ARE IN INCHES. TOLERANCES ON: 2 PLC DEC ± - 3 PLC DEC ± .015 ANGLES ± -	DR 6/14/91 JR RUTH
	CHK 6/14/91 MS FEHER
	APPD 6/14/91 C MEYERS
	APPD 6/14/91 D REINER
MATERIAL #4H BRASS	PRODUCT SPEC -
FINISH SEE TABLE	APPLICATION SPEC -
	WEIGHT -

AMP Incorporated Harrisburg, PA 17105-3608		
NAME RECEPTACLE, FASTON, .205 SERIES		
SIZE B	CAGE CODE 00779	DRAWING NO 42197
SCALE 5:1	SHEET 1 OF 1	